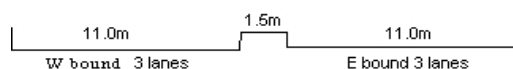
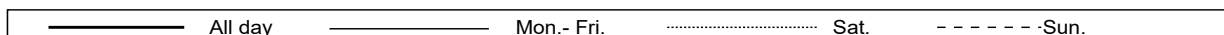
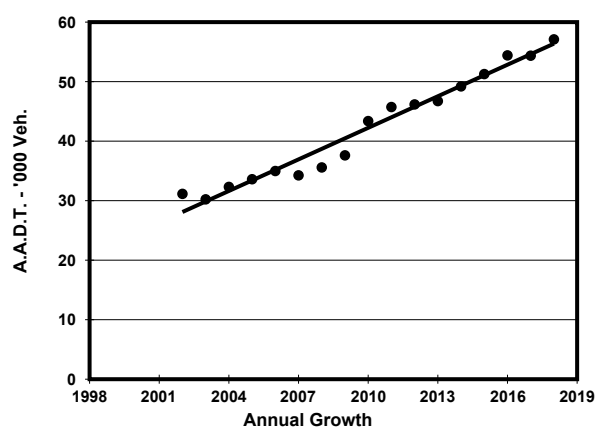
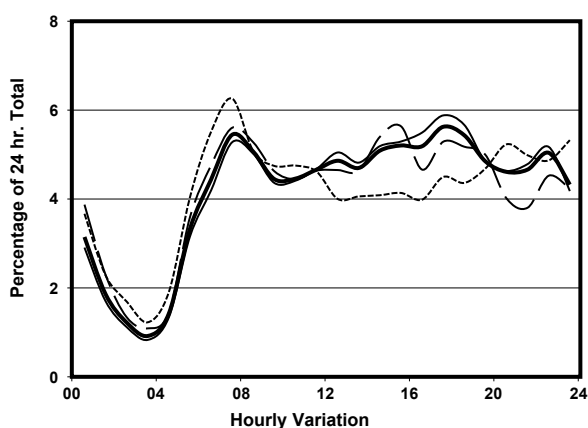
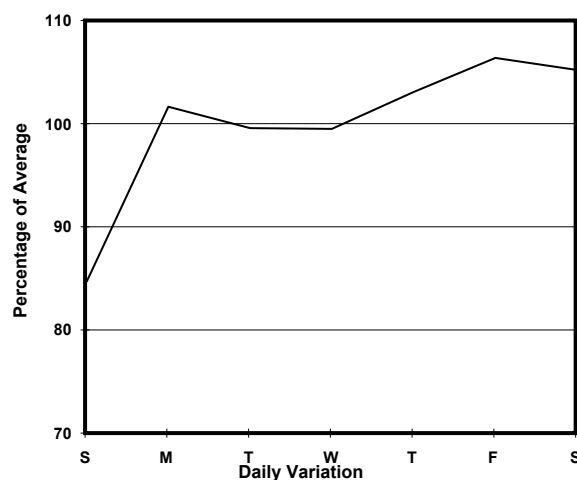
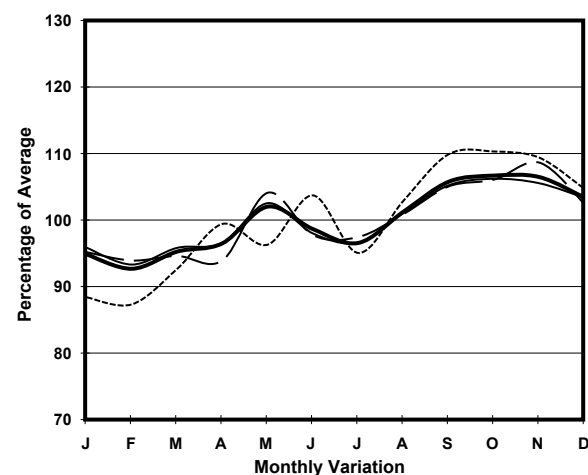


YEAR 2018
CORE STATION 5031
ROAD NETWORK MAJOR
ROAD TYPE EXPRESSWAY

LINK NORTH LANTAU HIGHWAY (from TUNG CHUNG
EASTERN INT to WESTERN END AT CHEK LAP KOK)



1. TRAFFIC FLOW VARIATION AND GROWTH



2. TRAFFIC CHARACTERISTICS (BY DIRECTION)

Parameter	All - Day	Mon. - Fri.	Sat.	Sun.
EAST BOUND				
A.A.D.T.	28730	29470	30370	25120
R 12 / 24 - %	60	60.9	59.5	55.1
R 16 / 24 - %	79.9	81	77.9	76
AM Peak Hour	0700-0800	0700-0800	0700-0800	0700-0800
One-way flow at AM peak hour	1360	1340	1520	1380
T - % (AM)	-	-	-	-
PM Peak Hour	1700-1800	1800-1900	1700-1800	1700-1800
One-way flow at PM peak hour	1840	2020	1780	1380
T - % (PM)	-	-	-	-
Prop.of commercial vehicles - 16 hr.	-	-	-	-
WEST BOUND				
A.A.D.T.	28370	29290	30320	23440
R 12 / 24 - %	60.4	61.4	60.6	54
R 16 / 24 - %	78.7	80.1	76.8	72.6
AM Peak Hour	0700-0800	0700-0800	0700-0800	0700-0800
One-way flow at AM peak hour	1750	1760	1880	1660
T - % (AM)	-	-	-	-
PM Peak Hour	1700-1800	1600-1700	1800-1900	1800-1900
One-way flow at PM peak hour	1370	1510	1510	910
T - % (PM)	-	-	-	-
Prop.of commercial vehicles - 16 hr.	-	-	-	-

3. OTHER INFORMATION AND COMMENT